



**A powerful cost management and recovery application which cuts operating costs and creates billable reports to assist with client invoicing, project estimation & projections.**

PlotLog is a powerful cost recovery and estimation tool that assists with the control and costing of printed drawings from AutoCAD. Costing against drawing size, media type and print quality are only a few of the features of this product.

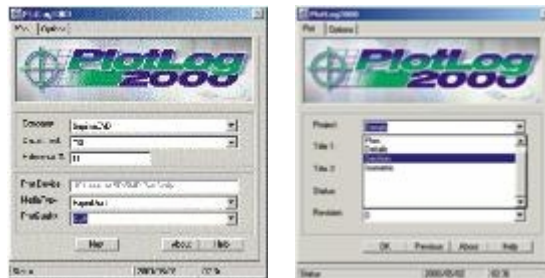
#### **Features and Benefits:**

- Easy to learn, easy to use
- Track and estimate plotting disbursements for projects
- Monitor paper usage and costings
- Record custom paper sizes by name
- Evaluate drafting skills and efficiency for respective users
- Create user defined fields for plot/print tracking
- User friendly dialogue boxes for capturing Print/Plot information
- Prepare cost reports by user, media type, Printer/Plotter make, orientation and paper size
- Plotlog Administration toolkit for administrative tasks
- Customisable user fields for designing reports by department, project and more
- Export data in a comma delimited format for use with other databases

PlotLog comprises two modules - the Workstation Client tracks plotting activity from a workstation and the Report Writer and Administrator performs administrative tasks and reporting.

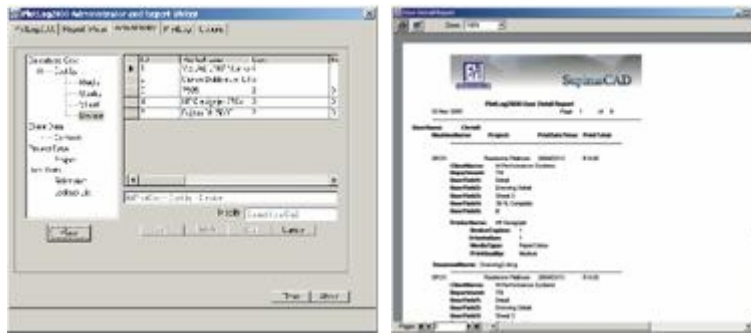
#### **Workstation Client**

The client interface allows the user to enter the relevant information for each plot. Easy to use list boxes offer a controlled environment for capturing the data relevant to each Project, Client or Department. The user interface mode can be interactive or set to background tracking by using the options folder. The user and workstation name is recorded with each record as well as the drawing name and date. Cost factors such as paper size, media type, print quality and printer costs can be allocated by the administrator. User defined fields for capturing additional data with each plot are available. Figures 1.1 and 1.2 show dialog boxes available for capturing plot information in AutoCAD.



#### **Report Writer and Administrator**

The Report Writer and Administrator tool has dual functionality - to create reports and administer the database. The Administrator tool utilises a tree structure to access the relevant tables in the database such as Client, Project, Department, User and Media (See Figures 2.1 and 2.2). The Report Writer tool allows the user to create and customise reports. Available reports are listed by Client, User, Project, Department, Printer, Media Type, and Print Quality. Select a report from the list provided or create your own personalised report and select the print icon. A zoom indicator is available as well as an export tool for exporting a report to a comma delimited file.



### Database Connector

The Database connector and synchronisation protects against network errors and allows tracking of data even should the network or database be inactive or unavailable. The Schedule function provides for daily, weekly or monthly synchronisation options. The plot option allows for immediate updating. Selecting the Synchronisation button transfers data to the server database and clears the user database and all synchronisation attempts are backed up to prevent data loss. The status bar at the bottom of the dialogue displays the status of the synchronisation function. Synchronisation can be executed on a Server to Client, or Client to Server basis.

### Configuration Tool

The configuration tool allows for easy configuration of Server and Client on a workstation. Simply select User or Server, browse the directory structure and choose the required directory where the installed product files are located. If the locate function is successful the update button becomes available which writes the configuration changes to file.

### Support & Training

Ferrer Hayim offers support as well as on-site training and workshops on request.

### System Requirements

<i>Hardware:</i>	IBM Compatible Pentium I with 3.5" stiffy disk drive and EGA or higher resolution monitor
<i>Memory Required:</i>	16 Mb RAM (32 Mb preferred)
<i>Disk Space Required:</i>	20 Mb
<i>Operating System:</i>	Windows 95, Windows 98, Windows 2000, Windows NT 98 & 95